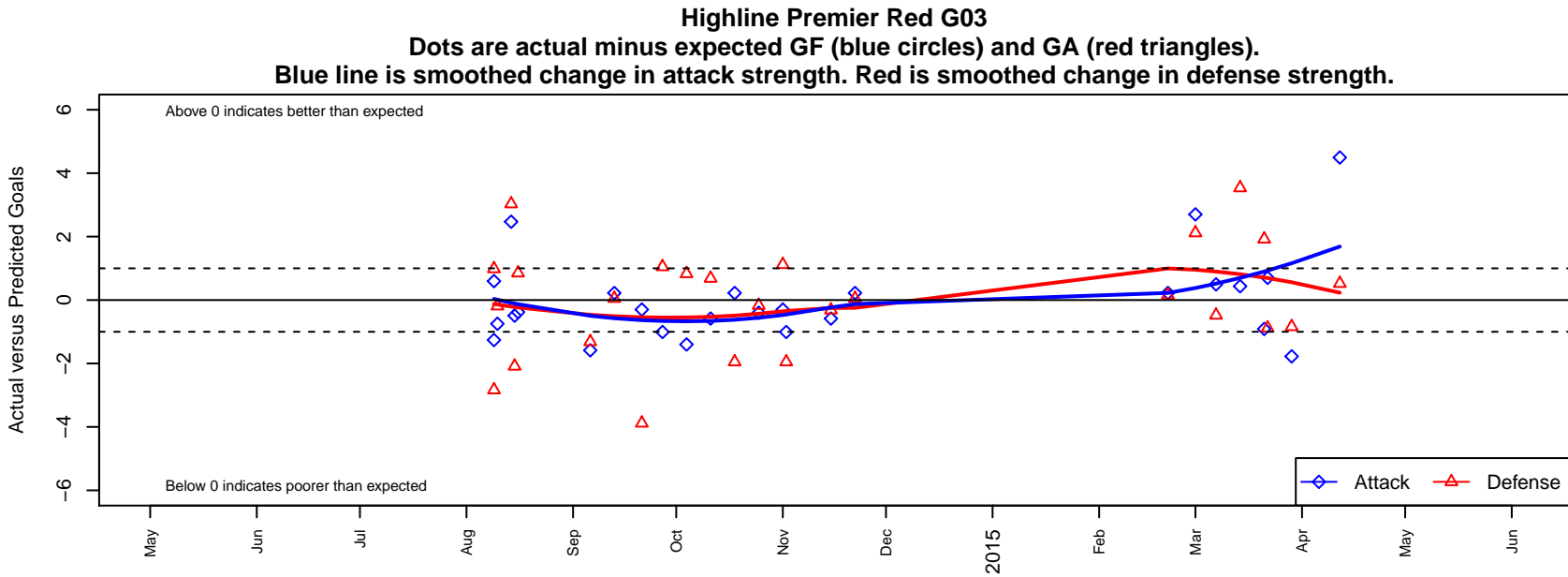


# Highline Premier Red G03

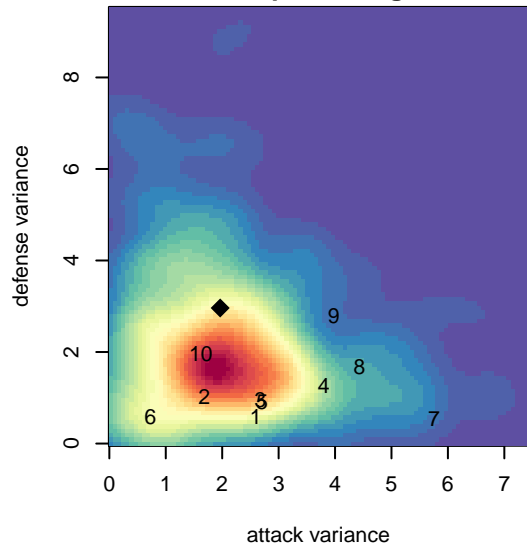
Highline Premier FC  
 Burien, WA  
 G03 total strength=377  
 attack=0.38 defense=0.14  
 fall league = PSPL Classic 2 U11  
 spr league = Spr PSPL Classic 2 U11

alt names used:  
 HIGHLINE PREMIER FC HPFC G03 RED ()  
 Highline Premier FC G03 Red  
 Highline Premier G-03 Red  
 Highline Premier FC G03 Red

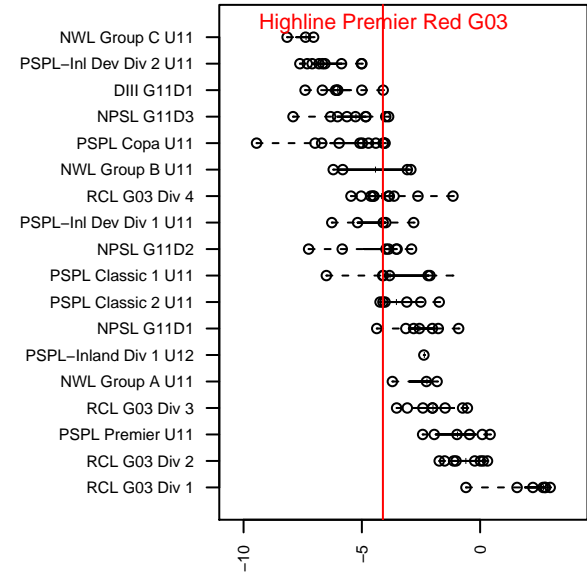
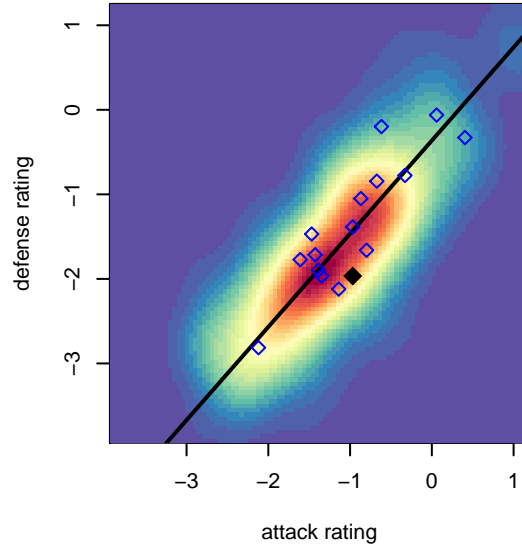
Venues played:  
 2014 River Jam Samba U11  
 2014 Bigfoot Silver U11  
 2014 PSPL Classic 2 U11  
 2014 Spr PSPL Classic 2 U11



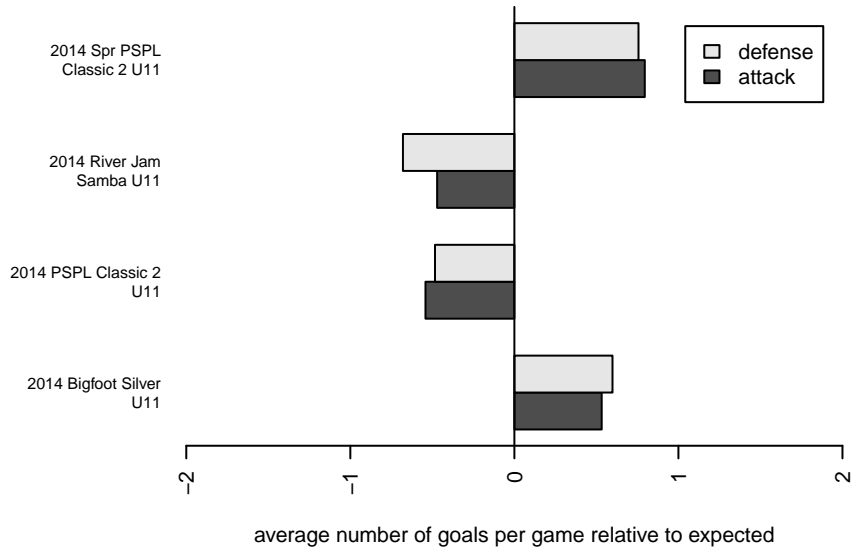
**attack and defense variance (black dot)  
relative to other teams  
and top 10 in region**



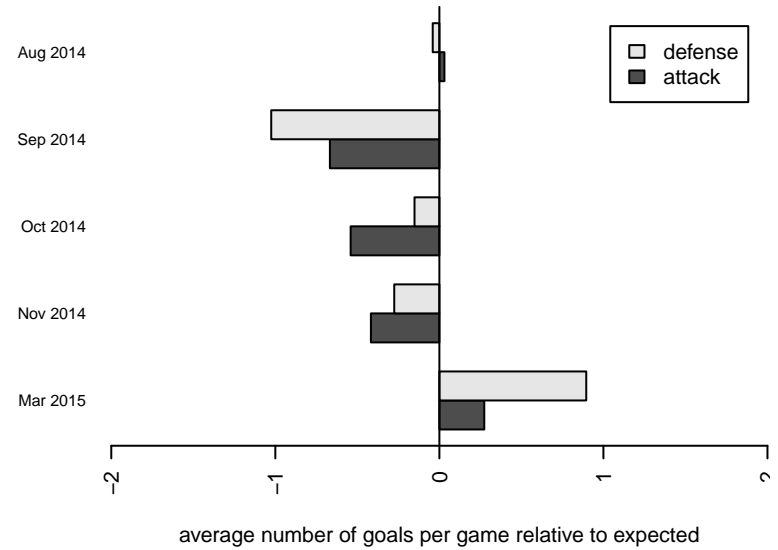
**attack and defense rating  
relative to others at age  
and all opponents in last 13 months**



**Performance relative to 13 month average**



**Performance relative to 13 month average**



| date       | home                               |   | away                               |   | venue                       | pred.home | pred.away |
|------------|------------------------------------|---|------------------------------------|---|-----------------------------|-----------|-----------|
| 2015-04-12 | Highline Premier Red G03           | 7 | West Seattle En Fuego Red G04      | 2 | 2014 Spr PSPL Classic 2 U11 | 2.51      | 2.52      |
| 2015-03-29 | Seattle Celtic White G03           | 3 | Highline Premier Red G03           | 0 | 2014 Spr PSPL Classic 2 U11 | 2.16      | 1.78      |
| 2015-03-22 | Wenatchee Valley United Tigers G03 | 3 | Highline Premier Red G03           | 3 | 2014 Spr PSPL Classic 2 U11 | 2.12      | 2.30      |
| 2015-03-21 | CWSA Navy G03                      | 0 | Highline Premier Red G03           | 1 | 2014 Spr PSPL Classic 2 U11 | 1.92      | 1.91      |
| 2015-03-14 | Highline Premier Red G03           | 2 | FME Fusion G03                     | 0 | 2014 Spr PSPL Classic 2 U11 | 1.56      | 3.54      |
| 2015-03-07 | West Seattle En Fuego Red G04      | 3 | Highline Premier Red G03           | 3 | 2014 Spr PSPL Classic 2 U11 | 2.52      | 2.51      |
| 2015-03-01 | Highline Premier Red G03           | 5 | Wenatchee Valley United Tigers G03 | 0 | 2014 Spr PSPL Classic 2 U11 | 2.30      | 2.12      |
| 2015-02-21 | Highline Premier Red G03           | 2 | Seattle Celtic White G03           | 2 | 2014 Spr PSPL Classic 2 U11 | 1.78      | 2.16      |
| 2014-11-22 | Highline Premier Red G03           | 1 | FC Edmonds Revolution G03          | 4 | 2014 PSPL Classic 2 U11     | 0.78      | 4.05      |
| 2014-11-15 | West Seattle En Fuego G03          | 2 | Highline Premier Red G03           | 1 | 2014 PSPL Classic 2 U11     | 1.68      | 1.58      |
| 2014-11-02 | MVP Marauders Navy G03             | 5 | Highline Premier Red G03           | 0 | 2014 PSPL Classic 2 U11     | 3.05      | 1.01      |
| 2014-11-01 | Highline Premier Red G03           | 2 | Wenatchee Valley United Tigers G03 | 1 | 2014 PSPL Classic 2 U11     | 2.30      | 2.12      |
| 2014-10-25 | Normandy Park SC Red G03           | 3 | Highline Premier Red G03           | 1 | 2014 PSPL Classic 2 U11     | 2.83      | 1.40      |
| 2014-10-18 | FC Edmonds Revolution G03          | 6 | Highline Premier Red G03           | 1 | 2014 PSPL Classic 2 U11     | 4.05      | 0.78      |
| 2014-10-11 | Highline Premier Red G03           | 1 | West Seattle En Fuego G03          | 1 | 2014 PSPL Classic 2 U11     | 1.58      | 1.68      |
| 2014-10-04 | Highline Premier Red G03           | 0 | Normandy Park SC Red G03           | 2 | 2014 PSPL Classic 2 U11     | 1.40      | 2.83      |
| 2014-09-27 | Highline Premier Red G03           | 0 | MVP Marauders Navy G03             | 2 | 2014 PSPL Classic 2 U11     | 1.01      | 3.05      |
| 2014-09-21 | Wenatchee Valley United Tigers G03 | 6 | Highline Premier Red G03           | 2 | 2014 PSPL Classic 2 U11     | 2.12      | 2.30      |
| 2014-09-13 | Highline Premier Red G03           | 1 | FC Edmonds Revolution G03          | 4 | 2014 PSPL Classic 2 U11     | 0.78      | 4.05      |
| 2014-09-06 | West Seattle En Fuego G03          | 3 | Highline Premier Red G03           | 0 | 2014 PSPL Classic 2 U11     | 1.68      | 1.58      |
| 2014-08-16 | NWN Red G04                        | 7 | Highline Premier Red G03           | 0 | 2014 Bigfoot Silver U11     | 7.85      | 0.38      |
| 2014-08-15 | WA Rush Azul G03                   | 4 | Highline Premier Red G03           | 2 | 2014 Bigfoot Silver U11     | 1.91      | 2.49      |
| 2014-08-14 | Snohomish United Black G03         | 7 | Highline Premier Red G03           | 3 | 2014 Bigfoot Silver U11     | 10.03     | 0.53      |
| 2014-08-10 | Highline Premier Red G03           | 0 | WPFC B G03                         | 6 | 2014 River Jam Samba U11    | 0.75      | 5.81      |
| 2014-08-09 | WPFC Fury Black G04                | 0 | Highline Premier Red G03           | 5 | 2014 River Jam Samba U11    | 0.98      | 6.26      |
| 2014-08-09 | Kitsap Alliance Red G03            | 7 | Highline Premier Red G03           | 1 | 2014 River Jam Samba U11    | 4.17      | 0.40      |